

Upright Builders, Homesite 3

5 BR | 4.5 BA | 4,196 SF



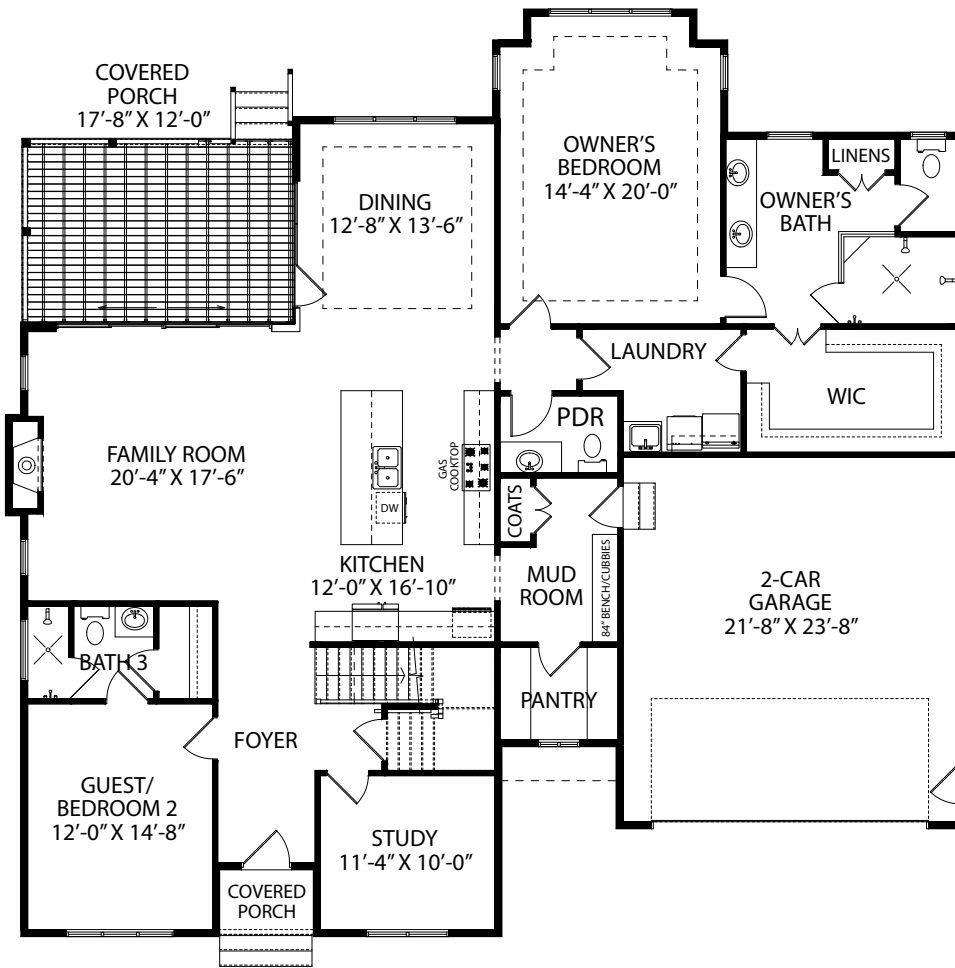
41 COTTAGE WAY, PITTSBORO, NC 27312



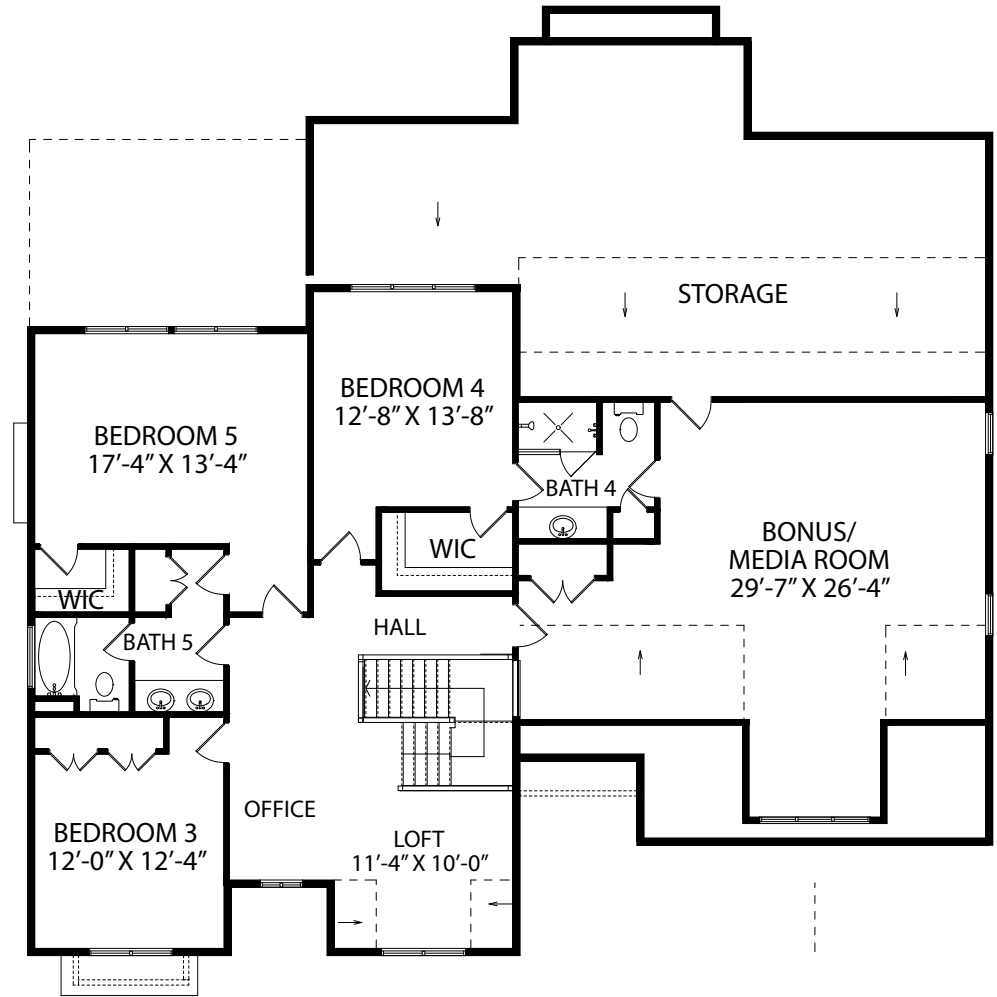
919-278-7687 | 500 VINE PARKWAY, PITTSBORO NC 27312 | VINEYARDSATCP.COM

Floorplans and renderings are artistic representations and subject to change without prior notice. Dimensions are approximate. Sales by Coldwell Banker Howard Perry and Walston New Homes & Land. 11/01/2022





FIRST FLOOR



SECOND FLOOR