

# Upright Builders, Homesite 15

4 BR | 4.5 BA | 3,131 SF



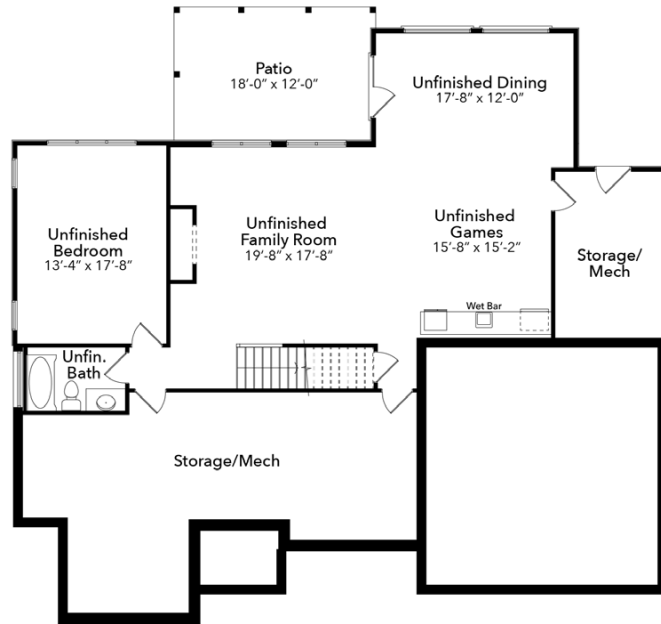
205 COTTAGE WAY, PITTSBORO, NC 27312



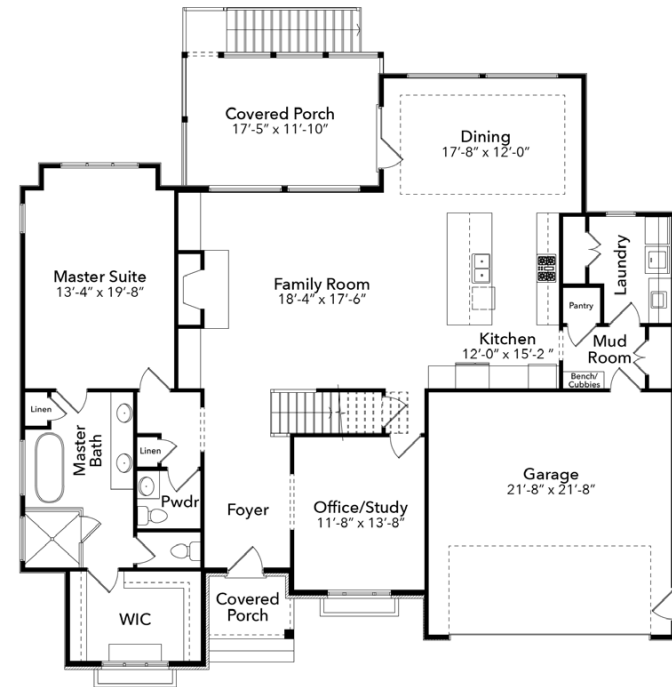
919-278-7687 | 235 COTTAGE WAY, PITTSBORO NC 27312 | [VINEYARDSATCP.COM](http://VINEYARDSATCP.COM)

Floorplans and renderings are artistic representations and subject to change without prior notice. Dimensions are approximate. Sales by Coldwell Banker Howard Perry and Walston New Homes & Land. 08/10/2020

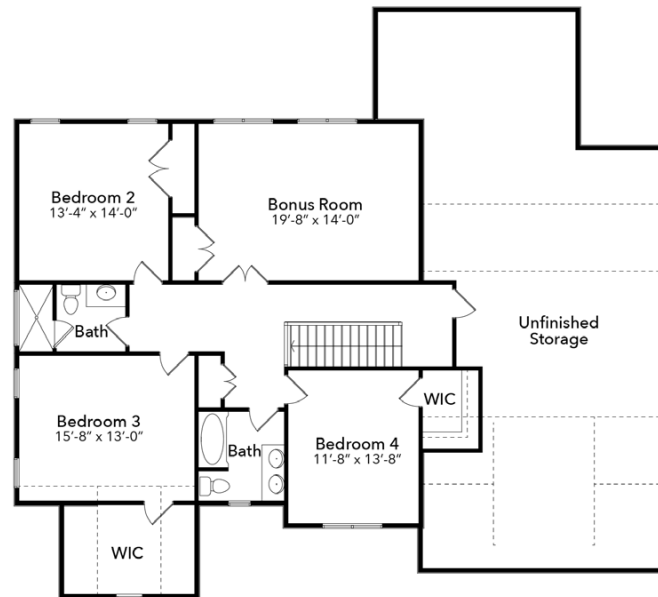




**BASEMENT**



**FIRST FLOOR**



**SECOND FLOOR**